

FLAPPER FILOSOFY

Original Artwork

Flapper Filosofy was a newspaper comic panel distributed by King Features Syndicate and the O'Dell Newspaper Service. It ran during the flapper era, from 1929 to 1935. The art was by Faith Burrows.

Each panel exhibited a flapper wearing one of the current fashions, with a witticism typed at the bottom. Burrows drew her panels at an image size of 3" × 6" on Bristol boards measuring 3½" × 6½".

Burrows' series ran in competition for a time with Ethel Hays' similarly themed and well-established Flapper Fanny Says panel from NEA. As writers such as F. Scott Fitzgerald and Anita Loos, and illustrators such as Burrows, Hays, Russell Patterson and John Held Jr. popularized the flapper look and lifestyle through their works, flappers came to be seen as attractive, reckless and independent.

We are pleased to offer mounted examples of the original pen and ink drawings, many mounted together with examples of the printed cartoon.



Aviatrix £250

Girl with Blouse £150

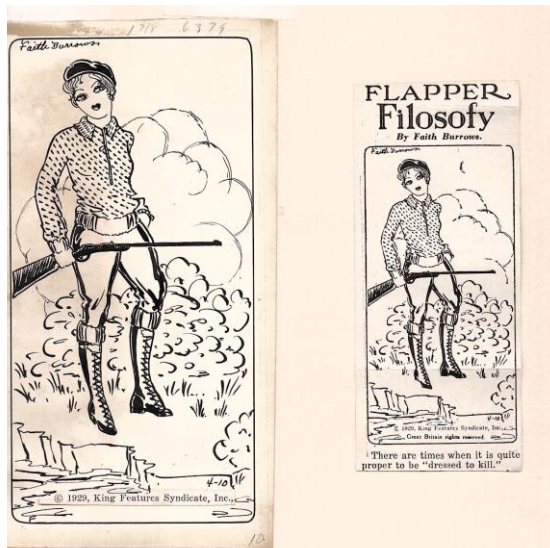


Girl Smoking £150

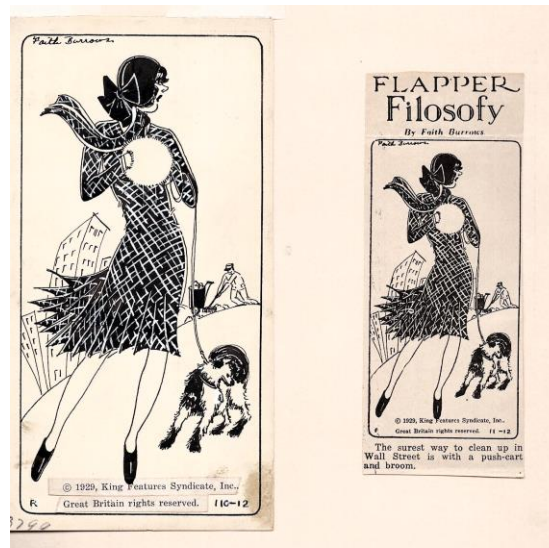


Christmas Spirit £250





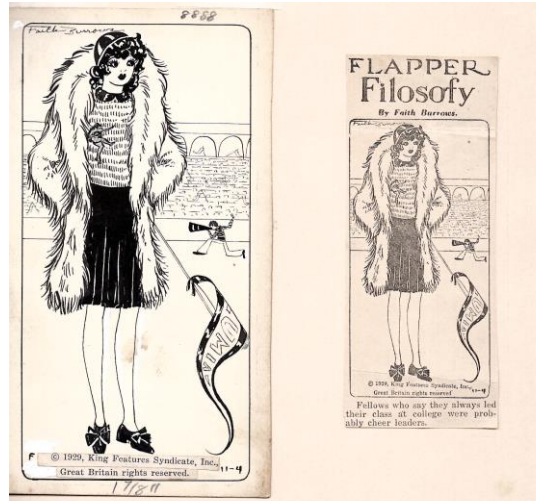
Dressed to Kill £250



Wall Street £250



Girl with Glass £200



Cheerleader £250



Flower Girl £250